



Border Ranges Richmond Valley Landcare Network Inc.

Annual Report 2021-2022



people, biodiversity, land, agriculture, environment

**From Border Ranges, Richmond Valley to Bungawalbin and Coast
An alliance of community-based Landcare, Farming and
Natural Resource Management Groups**

**Endorsed by the BRRVLN Committee
October 2022**

Mission: *Support and work with groups and land managers towards effective and productive natural resource stewardship within a human setting*

Border Ranges Richmond Valley Landcare Network (BRRVLN) is a not-for-profit incorporated association whose members are groups (Landcare groups, Farming groups) interested in natural resource management issues. Individuals who do not have the opportunity to join a member group can join a sub-group known as Friends of BRRVLN.

Each member group has a seat on the committee and has one vote. The executive committee, being the office bearers, address the day to day affairs of the organisation.

BRRVLN is also seeking partners and associates who can provide technical and other resources.

BRRVLN hosts a Local Landcare Coordinator available to provide support for all member groups.

BRRVLN Objectives:

- a. To encourage land managers towards effective and productive natural resource stewardship within a human setting.
- b. To provide support towards ongoing health of the people, the land and its natural and agricultural resources.
- c. To assist with the identification of issues relating to land use, soil, water and vegetation resources
- d. To foster cooperation and collaboration between land managers (public and private)
- e. To act as a conduit between land managers and government
- f. To facilitate the implementation of best management practices which will support long-term, profitable primary production and ensure the integrity of soil, water and energy systems, as well as the conservation of native plant and animal communities;
- g. To assist Landcare groups, rural industry groups, individuals, land management agencies, research organisations and other community bodies to collaborate on issues of land management and associated social implications, including the promotion and resourcing of Landcare activity.
- h. To assist with the resourcing and management of projects that address these objectives
- i. As a local network be a member of North Coast Regional Landcare Network and Landcare NSW

2021-2022 BRRVLN Actions and Achievements

Providing entry level support to Community / Landcare

Over the 2021-22 financial year BRRVLN hosted the **Local Landcare Coordinator Initiative Project**.

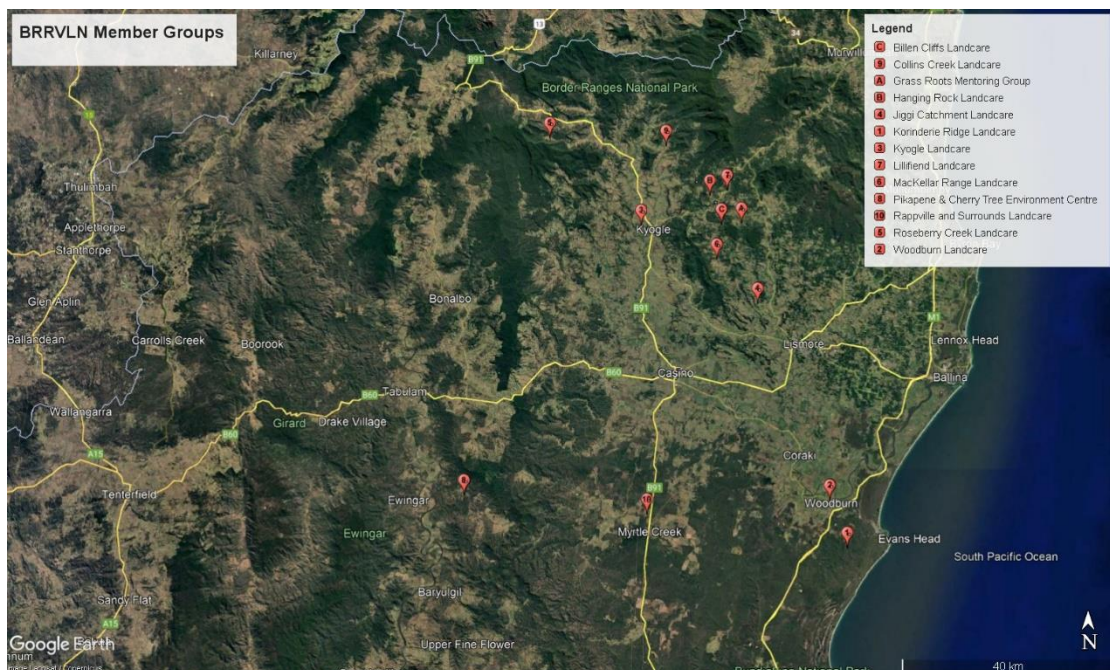
This contract aims to **support community interests** in Landcare and **build capacity** of landholders, Landcare groups and farming groups to undertake Landcare activities. This role supports both landholders that have an existing relationship with Landcare and landholder that are new to the conversation.

The BRRVLN Landcare office holds an open door to the community on Tuesdays and Thursdays as supported by the Local Landcare Coordinator Initiative. The BRRVLN office receives a diverse range of enquires a snapshot of which is presented below.

weeds, soils, **landslides**, native bees, **feral cats**, **tree planting**, water quality, indian mynas, **funding**, **riparian**, pasture, **fencing**, **nest boxes**, farm planning, **erosion**, threatened species, **partnerships**, fish, **frogs**, corridors, poisonous plants, **citizen science**, **land for wildlife**, cell grazing, **cane toads**, bush regeneration, **governance**, cultural fire, **species lists**, project planning, **bank stabilisation**, fundraising, **dung beetles**, **volunteers**, field days, **conservation**.

The BRRVLN Landcare office receives diverse enquiries, through phone, email and direct at the office. While some enquires are resolved at the initial point (e.g. identifying a weed species) many develop into greater longer-term engagement and connection within the Landcare community.

Through 21-22 BRRVLN provided tailored support to **15 member groups** extending across the Kyogle and Richmond Valley LGA's.



Providing learning opportunities through field days and events



LANDCARE LED
BUSHFIRE RECOVERY GRANTS RECIPIENT

BORDER RANGES RICHMOND VALLEY LANDCARE

**NATIVE GRASS IDENTIFICATION
AND
SEED COLLECTION WORKSHOP**

David Carr - Stringybark Ecological
Rob McCosker - Landholder

**THURSDAY 17TH FEBRUARY
10 AM - 1 PM**

ROCK VALLEY
(ADDRESS UPON REGISTRATION)

To register: Tamar Cohen 0438 752 233 or tamar.cohen@brrvln.org.au

This Landcare Led Bushfire Recovery Project has been supported by the Australian Government's Bushfire Recovery Program for Wildlife and their Habitat.

2021

July	Feral Deer Community Awareness with Tweed Landcare - Bentley & The Risk - 55 participants
	Off-stream watering with Ozfish and Lismore LCC - Whian Whian – 22 p.
July	Pasture walk – Unumgar – 18 p.
Aug	Community planting and water bug detection - Wiangaree – 14 p.
Sept	Planning your revegetation project – Kyogle – 18 p.
	Methods for managing Koala habitat – Collins Creek – 20 p.
Oct	Hollow Hog / carved hollows induction – Whian Whian – 15 p.
Dec	Cane toad information session – Bonalbo – 20 p.
	Feral deer specialist workshop with Tweed Landcare – Kyogle & Casino – 25 p.

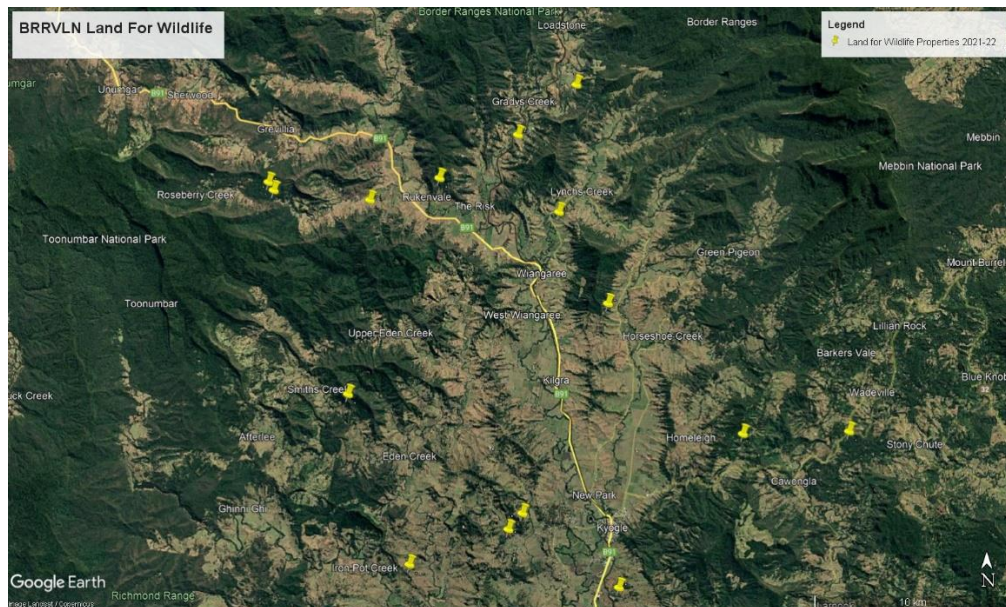
2022

Jan	Cane toad information session and bust – Kyogle, Korinderie Ridge, Bonalbo, Hogarth Range, Rappville, Whian Whian – 211 people
Feb	Native grass identification and seed collection – 27 p.
	Rising strong with droughts and flooding rains – Roseberry Creek - 18 p.
	Cane toad information session and bust – Deep Creek - 9 p.
	Native grass train the trainer session – Dunoon – 21 p.
Mar	Soil health and pastures workshop – Unumgar – 30 p.
Apr	Post fire revegetation and community planting – Dairy Flat – 9 p.
	Landslide seminar – Lismore – 92 p.
June	Hydromulching workshop – Larnook – 20 p.
	Protecting the leaf tailed Gecko – Rappville – 13 p.
	Fire planning and the Eastern Bristlebird – Gradys Creek – 29 p.

Covid 19 restrictions continued to present some challenges to the BRRVLN events calendar particularly during July - Nov 2021 period with several events needing to be postponed or cancelled. Across the 21-22 FY BRRVLN conducted 29 workshops with a total of 704 participants include 6 collaborative workshops conducted in partnership with other neighbouring Landcare networks (212 participants).

Land for Wildlife

15 Land for Wildlife assessments were achieved in the 2021-22 financial year across the Kyogle LGA – Richmond Valley LGA's.



Employment

These above projects have offered significant opportunities to provide employment. Over the 2021-22 financial year BRRVLN facilitated direct employment of 30 people as BRRVLN staff with a collective total of 6473 hours. BRRVLN is proud to be able to create employment opportunities for people in the natural resource management field. Additional to this internal employment, BRRVLN engaged numerous contractors to deliver services within BRRVLN projects further supporting local employment.

Partnerships and relationships

Partnerships and relationships with other stakeholders and agencies have continued to improve with particular advancements with Kyogle Council, Richmond Valley Council, Local Land Services, NPWS, Southern Cross University, Casino Food Co-op, SubTropical Dairy, Dept Planning Industry and Environment, Friends of the Koala, Biodiversity Conservation Trust, Gugin Guddaba Aboriginal Land Council, Landcare NSW, Landcare Australia, and World Wildlife Fund.



Grants and Projects

Throughout the 2021 - 2022 financial year BRRVLN was engaged to directly deliver 25 projects. Many of these were done with local Landcare group partners.

Project	Funder	Term
Upper Richmond Sustainable Agriculture	LLS / CVA	11/18-06/23
Drought Resilience	DAWE	06/21-01/23
Cane Toad control at the containment line	DPE	2018-2022
Pest Animal Control - Cane Toad control	LLS	01/21- 09/21
Cane Toad Control	LLS	02/22-06/22
Managing Cane Toads at the Biosecurity Zone	RVC	10/21-05/22
Northern Rivers Feral Deer - through Tweed Council	DPI	06/20-12/21
Climate-ready revegetation	DPE	05/20-05/25
W3 Weeds Chinese Tallow	LLS	11/20-11/21
Targeted weed control in the Border Ranges	NPWS	07/21-10/21
Bushfire Revegetation	LNSW	06/21-08/21
Bushfire Recovery in TEC's	LLS	03/21-06/22
Supporting the Mid-stratum	Landcare Australia	08/21-06/22
Habitat Recovery in Rappville surrounds	DAWE	04/21-06/23
Habitat Recovery for Hollow Dependent Fauna	Landcare Australia	04/21-06/22
Kates Leaf Tailed Gecko post fire	DAWE	09/20-12/21
Eastern Bristlebird project	LLS	03/22-06/24
Kyogle Koala Corridors	NSW ET	11/20-06/23
Land for Wildlife Koala habitat management	WWF	02/21-10/22
Addressing erosion in Koala habitat	WWF	04/22-10/22
Koala SAT Surveys	WWF	11/21-08/22
Assessing flood impact on Koala habitat plantings	DPE	05/22-10/22
Working Together – Indigenous engagement	LNSW	05/21-09/21
BRRVLN office upgrades	FRRR	01/22-01/23
Supporting Landholders impacted by landslides	NRCF	03/22-06/22

