

BORDER RANGES -  
RICHMOND VALLEY  
LANDCARE NETWORK INC

---

ANNUAL  
REPORT

---

2022/2023



---

## MISSION

---

Support and work with  
groups and land  
managers towards  
effective and productive  
natural resource  
stewardship within a  
human setting



# WHO ARE WE?

Border Ranges Richmond Valley Landcare Network (BRRVLN) is a not-for-profit incorporated association whose members are groups (Landcare groups, Farming groups) interested in natural resource management issues.

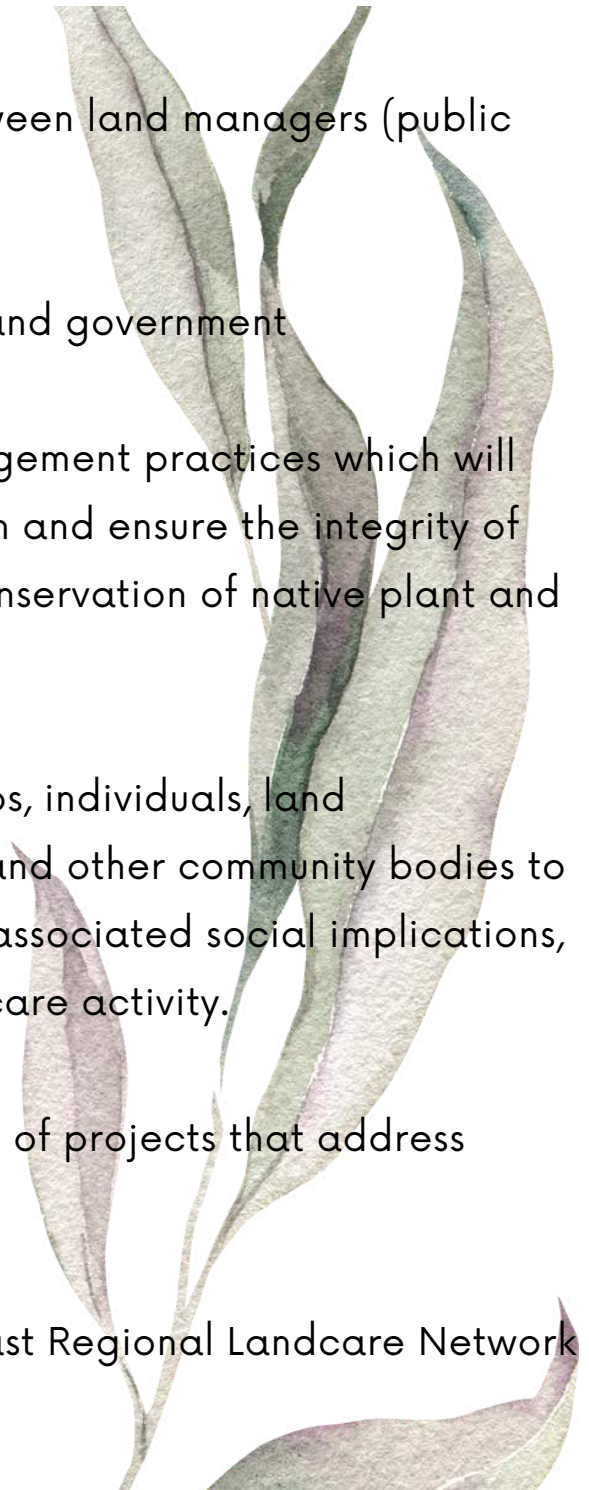
Member groups can contribute to BRRVLN planning and decision making and be part of the broader direction of Landcare in the region. The executive committee, being the office bearers, support the day-to-day operations of the organisation.

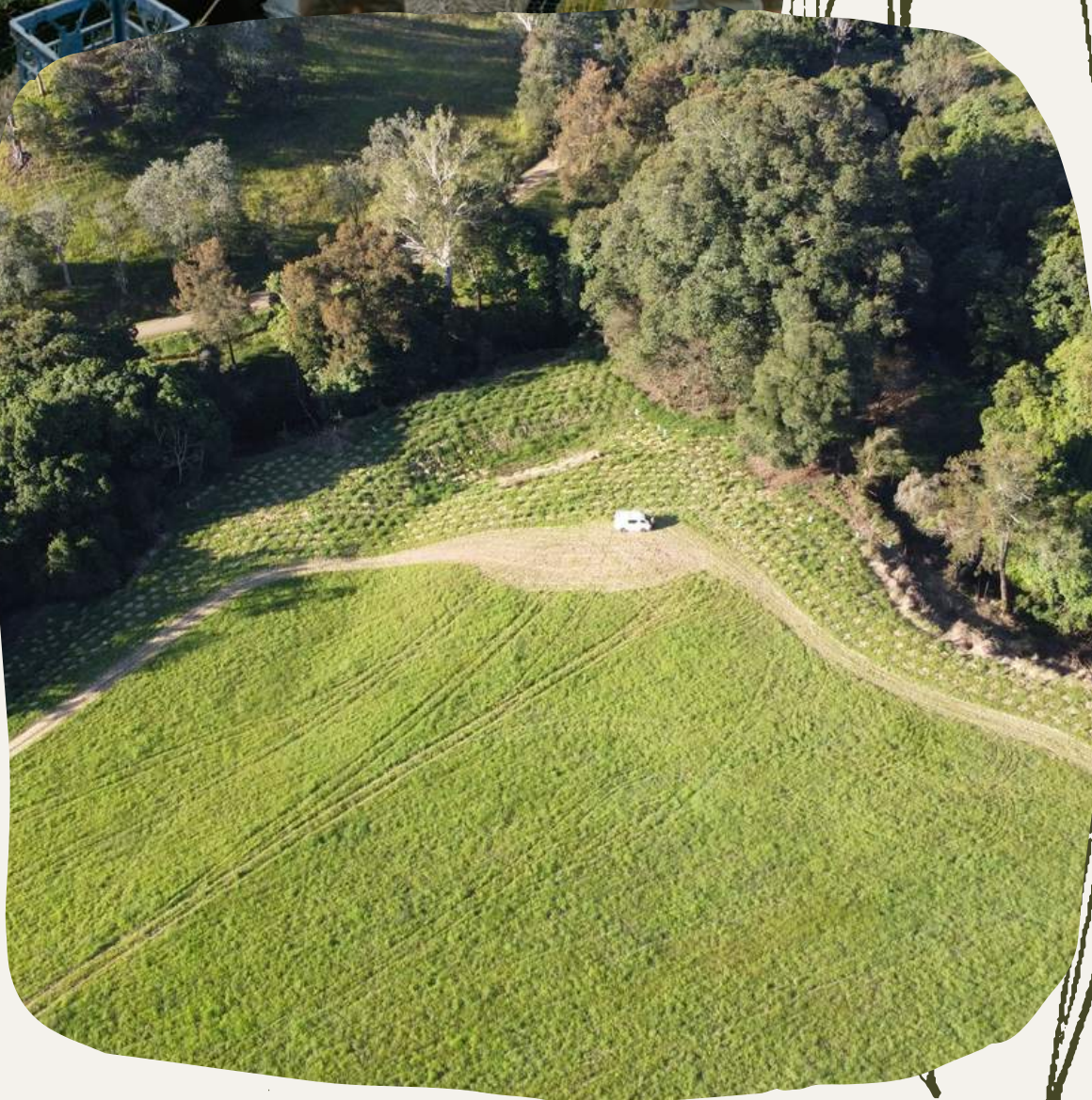
BRRVLN work with partners and associates to facilitate access to technical and other resources. BRRVLN hosts a Local Landcare Coordinator available to provide support for member groups with their local goals and activities.



# OUR OBJECTIVES

- a. To encourage land managers towards effective and productive natural resource stewardship within a human setting.
- b. To provide support towards ongoing health of the people, the land and its natural and agricultural resources.
- c. To assist with the identification of issues relating to land use, soil, water and vegetation resources
- d. To foster cooperation and collaboration between land managers (public and private)
- e. To act as a conduit between land managers and government
- f. To facilitate the implementation of best management practices which will support long-term, profitable primary production and ensure the integrity of soil, water and energy systems, as well as the conservation of native plant and animal communities;
- g. To assist Landcare groups, rural industry groups, individuals, land management agencies, research organisations and other community bodies to collaborate on issues of land management and associated social implications, including the promotion and resourcing of Landcare activity.
- h. To assist with the resourcing and management of projects that address these objectives
- i. As a local network be a member of North Coast Regional Landcare Network and Landcare NSW

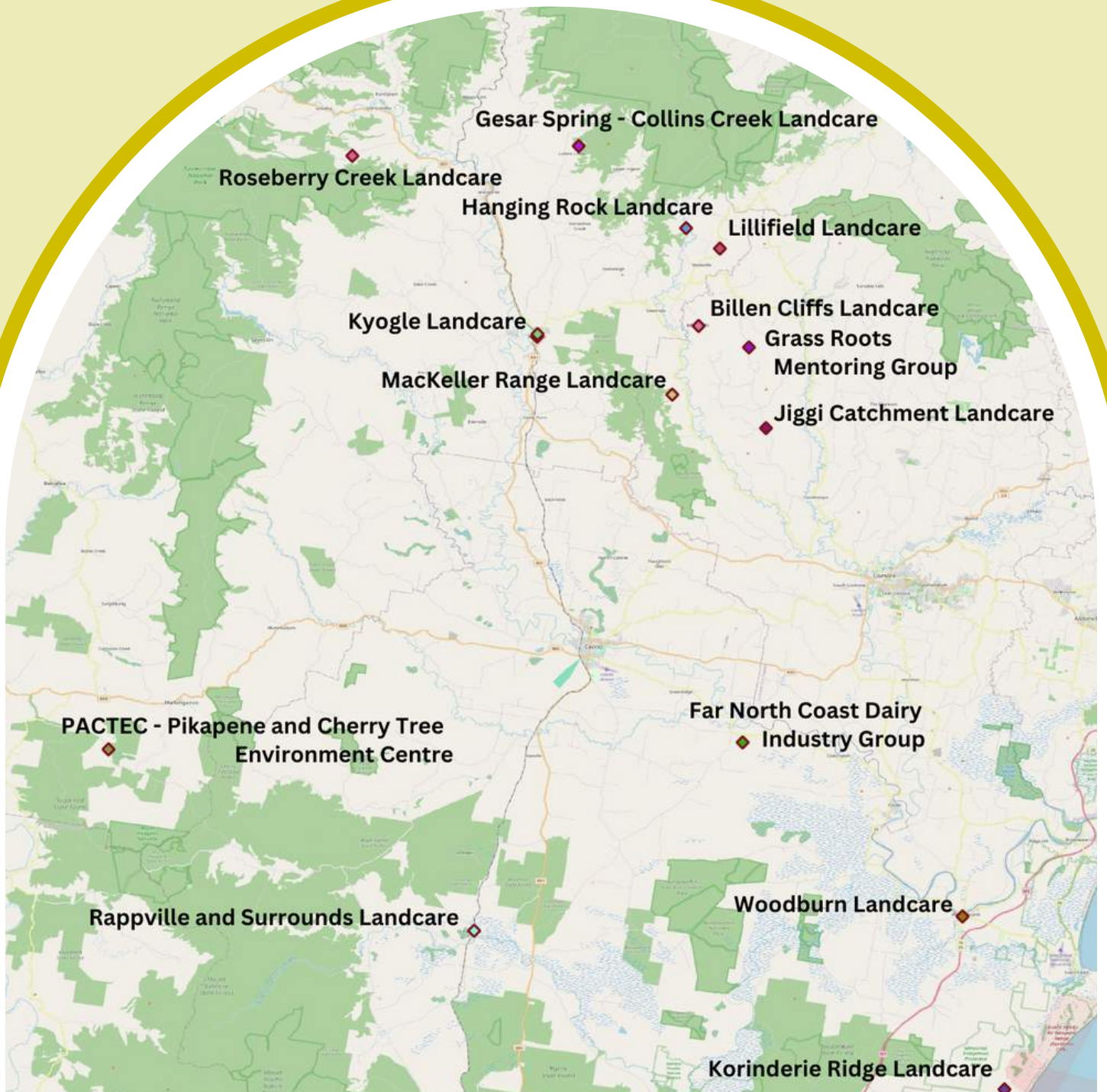




# PROVIDING SUPPORT TO THE LANDCARE COMMUNITY



Supported 14 member groups across the Kyogle, Richmond Valley and Lismore LGAs along with numerous Individual landholders



# PROVIDING SUPPORT TO THE LANDCARE COMMUNITY

## BRRVLN hosted the Local Landcare Coordinator Initiative in 2022-2023

The Landcare Coordinator role aims to support community interests in Landcare and build capacity of landholders, Landcare groups and farming groups to undertake Landcare activities. This supports both landholders that have an existing relationship with Landcare and welcomes those that are new to the Landcare realm.



Assisting a diverse range  
of enquiries such as:

weeds, soils, landslides, native bees, feral cats, tree planting, water quality, indian mynas, funding, riparian restoration, pasture, fencing, nest boxes, farm planning, erosion, threatened species, partnerships, fish, frogs, corridors, poisonous plants, citizen science, Land for Wildlife, regenerative agriculture, cane toads, governance, bush regeneration, cultural and ecological fire, species lists, project planning, bank stabilisation, fundraising, dung beetles, volunteers, field days, conservation.



Our office is open  
to the community on  
Tuesdays and  
Thursdays  
10am to 2pm

# PROVIDING LEARNING AND NETWORKING OPPORTUNITIES THROUGH FIELD DAYS AND EVENTS



47 events

1228 participants



Event	Participants
<b>July 2022</b>	
• Pasture-soils field day with Southern Cross University Students - multi site field tour	32
<b>September 2022</b>	
• Exploring the role of cultural burning in Koala Habitat - Roseberry Crk	32
• Community planting for koala habitat- The Risk	10
• Seed Collection and Propagation - Kyogle	18
• Planning your planting - Horse Station Crk	19
• Conservation Agreements, How, Where and Why? - Collins Creek	18
• Kyogle Koala Symposium- Kyogle	72
• Eucalypt and Native Grass ID - Fawcetts Plains	25
• Managing Bell Miner Associated Dieback - Smiths Crk	17
• Koala Habitat works in the Border Ranges with NPWS Rangers - Cougal	18
• Macro invertebrate sampling and ID basics - Roseberry Crk	12
• Monitoring koalas and their habitat - Citizen Science - Cawongla	18
<b>October 2022</b>	
• 2022 Bioblitz - Larnook	23
<b>November 2022</b>	
• Aquatic Macro invertebrate identification - Kyogle	12



## Boodahbee Festival of the Koala

KYOGLE SEPTEMBER 2022

SYMPOSIUM: SATURDAY 17TH SEPTEMBER

### WORKSHOPS:

- at 5th - Exploring the role and practice of cultural burning in Koala habitat
- Wed 7th - Community Tree Planting (1)
- Fri 13th - Planning your tree planting - species, spacings and site prep
  - Seed collection, processing, and propagation techniques
- Wed 14th - Conservation Agreements with Biodiversity Conservation Trust
- Wed 21st - Eucalypt and grass id & fostering grasses in open forest habitat
- Fri 23rd - Exploring the restoration of Koala habitat in Rock Valley
- Sat 24th - Managing Bell Miner Associated Dieback and its Impacts on Koalas
- Sun 25th - Explore Koala habitat & restoration works within the Border Ranges NP
- Tues 27th - Community Tree Planting (2)
- Wed 28th - Monitoring Koalas through citizen science and detection dogs

Register: <https://www.brnvn.org.au/events>  
 Email: [landcare.support@brnvn.org.au](mailto:landcare.support@brnvn.org.au)  
 Phone: 66322722 0457052636





December 2022

- Soil Health and pasture production - Gradys Crk 14
- Soil Health and pasture production - Doubtful Crk 40

January 2023

- Cane Toad Bust - Kyogle 24
- Landcare Stall and the Giant Pumpkin Festival -Kyogle

February 2023

- Nestbox Monitoring Workshop- Rappville 8

March 2023

- Cane toad workshop with Woodburn Garden Club 45
- Landcare stall at Bonalbo Working Dog Festival
- Nest Box Monitoring Workshop - Cawongla 10



April 2023

- Understanding Erosion & Riverbank Rehabilitation - Roseberry Crk 16
- Weed Management Workshop - Larnook 22
- Community Riparian Planting - Back Crk 13
- Cane toad Workshop - Jubullum Rangers - Tabulam 18
- Ridge to River Regen Camp - Collins Creek 28
- Scouts and Girl Guides Cane toad muster - Kyogle 11
- Southern Cross Uni Regen Ag Students Field Trip - Roseberry Crk 30
- Landscape Rehydration Walk - Roseberry Crk 12
- 'Our Rivers' Film Night - Kyogle 42
- Richmond River Paddle - Cedar Point 17
- Learning to 'see' the River - Ar workshop on the Riverbank - Cedar Point 11

May 2023

- Water bug surveys with Kyogle's small schools - Sheep Station Crk 45
- Weeds and Waterways workshop - Kyogle 17
- Landcare stall at Primex - Casino
- River Stories #1 - Eden Crk 21
- Pastures & Dung Beetles - Collins Crk 10
- River Stories #2 - The Risk 14
- Southern Cross Uni Regen Ag Students Field Trip 2 - Unumgar 37
- Reviving and Restoring Wetlands on the Floodplain - Cedar Point 29
- River Stories #3 - Kyogle 80
- River Listening - Kyogle 8
- Riverbank Rehabilitation - Gradys Crk 17
- Caring for the Cougal catchment talking weeds and water - Cougal 21

June 2023

- Soil Carbon update - Ettrick 35
- Birds of the Border Loop - Cougal 17

# EMPLOYMENT

---



Employed 3 Part-time staff



Employed 18 Casual staff



A total of 6667 employment hours

# LOCAL ECONOMY

---



Greater than \$575,000 of environmental services delivered by contractors



More than \$70,000 spent at local businesses on supplies and equipment



---

# PARTNERSHIPS AND RELATIONSHIPS

---



19 partner organisations

Kyogle Council, Richmond Valley Council, Local Land Services, NPWS, Southern Cross University, Casino Food Co-op, SubTropical Dairy, Dept Planning Industry and Environment, Friends of the Koala, Biodiversity Conservation Trust, Gugin Guddaba Aboriginal Land Council, Jagun Aboriginal Alliance, Githabul Rangers, Richmond Riverkeeper, Border Ranges Alliance, Nth Coast Regional Landcare Network, Landcare NSW, Landcare Australia, and World Wildlife Fund.

# LAND FOR WILDLIFE PROGRAM

19 NEW LAND FOR WILDLIFE PROPERTIES REGISTERED

11

Richmond Valley

8

Kyogle



# GRANTS AND PROJECTS



**25 Projects delivered**



**15 funding bodies**

Upper Richmond Sustainable Agriculture - Local Land Services/Conservation Volunteers Australia  
Drought Resilience - Landscape Rehydration - Dept of Agriculture Water and the Environment  
Restoration at Hanging Rock Falls - Crown Lands  
Enhancing Fish Habitat at Back Creek - Dept of Primary Industries  
Cane Toad Control in the Biosecurity Zone - Local Land Services  
Climate Ready Revegetation - Dept of Planning and Environment  
Habitat Recovery in Rappville surrounds - Dept Agriculture & Water  
Eastern Bristlebird Project - Local Land Services  
BioBlitz with the Biodiversity Conservation Trust - Biodiversity Conservation Trust  
Kyogle Koala Corridors - NSW Environmental Trust  
Working together to support Cultural Fire - North Coast Regional Landcare Network  
Land for Wildlife Koala Habitat Management - World Wide Fund  
Addressing erosion in Koala habitat - World Wide Fund for Nature  
Acoustic monitoring of Koalas - Dept of Planning and Environment  
Koala Habitat Management - Dept of Planning and Environment  
Koala SAT Surveys - World Wide Fund for Nature  
Gallagher Fencing of Koala Corridors - Landcare Australia  
Addressing flood impact in Koala habitat -World Wide Fund  
Drone seeding of landslides - World Wide Fund for Nature  
Landslip remediation plans - addressing threatened species impact - Local Land Services  
Targeted Community Weeds Projects post floods - Rous County Council  
Boxing Clever - monitoring nest boxes - WIRES  
Birdwing Butterflies in Schools with Roseberry Creek Landcare - Northern Rivers Community Foundation  
BRRVLN Office Upgrades - Foundation for Rural and Regional Renewal



# Boxing Clever



**Project Description:** Recruiting and training volunteer citizen scientists to continue the monitoring of artificial hollows post 2019/20 fires.

**Project Duration:** 12 months

**Funded by:** WiRES

**Geographic Reach :** Rappville and surrounds, Roseberry Creek, Dairy Flat, Cawongla, Homeleigh, Collins Creek, Smiths Creek

## Project outcomes



20 volunteer Citizen Scientists recruited



2 Training Workshops (Rappville and Cawongla)



37 properties



500+ artificial hollows monitored for occupancy and condition

# Upper Richmond Project



**Project Description:** Addressing vegetation, erosion and soil health decline on and around the highly productive alluvial floodplains of the Upper Richmond catchment

**Project Duration:** 2018-2023

**Funded by:** Regional Land Partnerships Program through North Coast Local Land Services

**Geographic Reach:** focus area in the Upper Richmond floodplain including Roseberry Crk, Doubtful Crk, Gradys Crk, North Casino & Ettrick

## Project outcomes



Over 100ha of field trials including 39ha of perennial pastures established



52 ha of soil assessments and amendments



25 Field Days and events in 2022-23



4 soil monitoring programs assessing soil chemistry, microbiology, pasture growth and quality



Water quality surveys

# Landslip Recovery



**Project Description:** Phase 1 focused on creating Landslip remediation plans on landslips that impacted sub-tropical rainforest following the 2022 flood event. Phase 2 saw commencement of on the ground works on a sub-set of properties.

**Project Duration:** Phase 1 - 2 months,  
Phase 2 - 6 months

**Funded by:** Local Land Services, WWF

**Geographic Reach :** Northern Rivers

## Project outcomes



Over 200 landslips registered



108 technical reports including  
49 remediation plans



16 landslips remediated including  
5 ha weed control, 5 ha planted to  
native trees, and 2 ha protected  
from soil erosion



Drone seeding trial on koala  
habitat funded by WWF

# Koala Habitat Restoration



**Project Description:** Koala Habitat Restoration

**Project Duration:** 2022-2023

**Funded by:** NSW Koala Strategy through NSW  
Department of Planning and Environment

**Geographic Reach :** Homeleigh, Collins Crk,  
Cawongla, Dairy Flat, Gradys Crk, Kippenduff,  
Roseberry Crk, Barkersvale, Wadeville, Lynches  
Crk, Smiths Crk, Fawcetts Plains

## Project outcomes



Supported condition improvement of  
40 hectares of Koala habitat through  
weed management and assisted  
regeneration



Planting of 950 Koala food trees in  
strategic linkage sites across 1.5 ha

# Roseberry Creek Landcare



24 Members  
5 community events  
112 participants  
10 cool burns implemented

## Projects / activities of interest

Hotspots workshop - supporting community collaboration in fire management planning and implementation for the protection and enhancement of biodiversity conservation partnering with the Rural Fire Service.

Birdwing Butterfly vines distributed throughout Roseberry Creek.

Members attended and hosted various workshops and field days.

Tree planting for erosion control.



# Billen Cliffs Landcare



18 Members  
4 community events  
98 participants  
21 working bees completed  
327 collective landcare hours  
220 trees planted  
4 ha of natural areas restored  
2 pest animals control  
1 cool burn implemented  
16 nest boxes / artificial hollows installed

## Projects or activities of interest

As part of the Glossy Squad Northern Rivers, we have been monitoring glossy black cockatoo activity, gathering data on movements, population numbers, feed trees, nesting behaviour, drinking and roosting sites, etc.

We have established and run a native plant nursery which supplies planting stock for our regen sites





# Kyogle Landcare



140 Members  
5 Events  
100 Volunteer Participants  
75 Working Bees

## Projects / activities of interest

- Community Riparian Plantings
- Flying Fox Workshop with Kyogle Council
- Flying Fox Habitat Planting
- Cane Toad Bust
- Community Nursery upgrades and native tree giveaways



# Korinderie Ridge Cooperative Bushcare



10 Members  
1 five day Regen Week event - catered, camping, networking and training to support long term strategic lantana control



## Projects / activities of interest

The Korinderie Ridge Cooperative are a participant in the Nature Conservation Council Large Forest Owl Project. We have partnered with the Jagun Alliance to facilitate cultural burns with Bandjalang custodians and collaborate with broader ecological fire management goals.

# Gesar Springs Landcare



10 Members  
12 Working Bees  
1 Cool burn  
110 Trees planted

## Projects / activities of interest

Inaugural Ridge to River Regeneration campout with 28 participants

Restoration of Koala habitat across 6 hectares

Planning for healthy fire

Monthly Working Bees



# Hanging Rock Landcare



12 Members  
10 Working Bees  
1000 trees planted

## Projects / activities of interest

Track and drain maintenance to mitigate erosion and restore condition following flood impacts

Signage to raise awareness of the site values and discourage littering

Weed management and assisted regeneration across 2 hectares.



# Grass Roots Mentoring Group



- 45 Members
- 4 Working Bees
- 160 Trees planted
- 5 Workshops
- 141 Attendees

## Projects / activities of interest

Supporting and encouraging group members with property planning, regeneration information and hands on assistance,  
Facilitating networking and mentoring each other  
Working bee sessions focusing on landslip remediation, riparian restoration, species associations, managing open grasslands and cool burning



# Mackellar Range Landcare



- 25 Members
- 20 Working Bees
- 9 hectares of weed control
- 850 trees planted
- 2 x Cool Burns
- 3 x Workshops

## Projects / activities of interest

Mackellar Range Landcare was a successful recipient of a 3 year Environmental Trust Restoration and Rehabilitation grant. In the 2nd year of the project they achieved secondary weed control across 9 hectares with supplementary planting of 850 trees.

Mackellar Range Landcare worked closely with Jagun Alliance to host a cultural burn workshop and undertake 2 x cool burns in August 2022 and June 2023.

Mackellar Range Landcare worked with BRRVLN to host a Bioblitz - A citizen science event.



**People**

**Biodiversity**

**Land**

**Agriculture**

**Environment**



# **Border Ranges Richmond Valley Landcare Network Inc Annual Report 2022-2023**

From Border Ranges, Richmond Valley to Bungawalbin and Coast  
Alliance of community-based Landcare, Farming and Natural Resource Management Groups



40 Summerland Way  
P.O. Box 410  
Kyogle NSW 2474

PH: 02 66 323 722  
[landcare.support@BRRVLN.org.au](mailto:landcare.support@BRRVLN.org.au)  
[WWW.brrvln.org.au](http://WWW.brrvln.org.au)